

AUTOMATIC TRACKING SYSTEM  
TWO WHEEL QUICK ALIGNMENT  
VOICE NAVIGATION  
EXTRA PARKING AID CAMERA



Model :V3DIII

# 3D WHEEL ALIGNMENT

---

*ACCURATE & FAST*

# 3D IMAGING WHEEL ALIGNMENT SYSTEM

More Fast, More Accurate and Good Repeatability!

## Features:

Automatic Tracking System with Up or Down with Targets

Real 3D Camera Measuring Technology

Just One Time Calibration in Factory

Brand Dell Computer with Windows 7 System

Humanized Design of Alignment Software with Easy-to-use Operation

English Voice Navigation for Operation

Multi-language Alignment Software Interface

More than 20,000 Car models Specification Worldwide with Free Update

Extra Camera for Lift Parking Aid System

Two Wheel Quick Alignment Function

## Main Technical Parameters

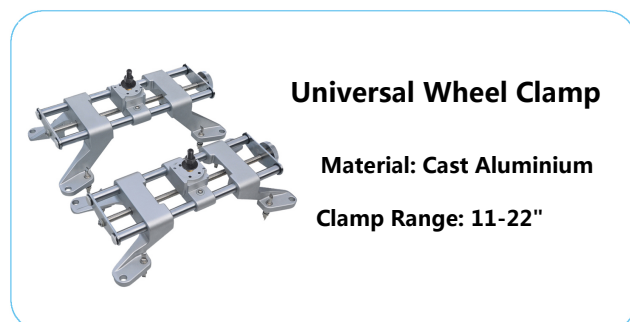
Projects	Accuracy	Range
Display Accuracy	0.01mm / 0.01°	/
SAI	±0.05°	±25°
Camber	±0.02°	±10°
Toe	±0.02°	±20°
Caster	±0.05°	±20°
Thrust angle	±0.02°	±10°
Back angle	±0.01°	±10°
Total Toe	±0.02°	±20°

### Power Request:

100-240V, 50/60HZ, Single Phase

### Installation Type:

4 Post Cr Lift, Scissor Lift or Pit Type



*Quick alignment, saving your time and make more profit---Join us together!*

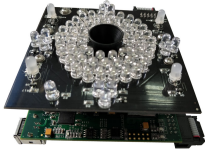
# "SMART" Cameras + "EASY" Software

Data Acquisition using high resolution 3D imaging cameras



Camera can track the targets and move automatically

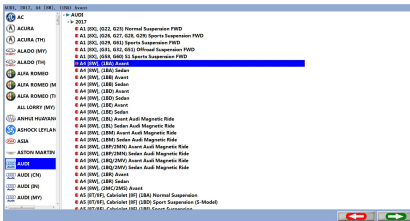
No Electronics on Wheels



Unique design for alignment only, not industrial camera  
Background removing function exclude strong or dark light effect  
Super long usage life of LED strobe, camera can still work even half of LED damage

## EASY-TO-USE WHEEL ALIGNMENT SOFTWARE

Simple steps alignment: Save Time and Increase Revenue

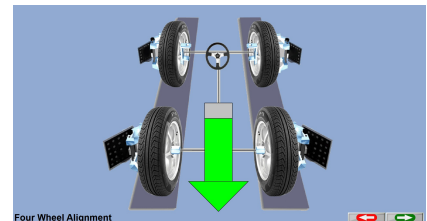


Car Model Selection

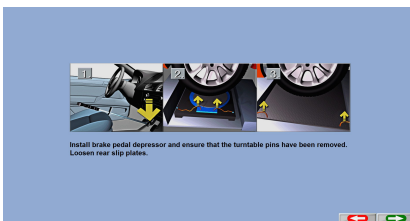
Primary Specifications

Model	2017	AI	ISA	(HS)	Avant			
Front								
Caster		Min.	Prof.	Max.	Cross	Min.	Prof.	Max.
Camber	-1.10°	-0.72°	-0.33°	0.50°	-1.10°	-0.72°	-0.33°	
SAT								
Individual Toe	0.08°	0.17°	0.25°		0.08°	0.17°	0.25°	
Total Toe								
		Min.	Prof.	Max.				
		0.17°	0.33°	0.50°				
Rear								
Camber	-1.25°	-0.83°	-0.42°	0.50°	-1.25°	-0.83°	-0.42°	
Individual Toe	0.09°	0.17°	0.25°		0.09°	0.17°	0.25°	
Total Toe								
		Min.	Prof.	Max.				
		0.17°	0.33°	0.50°				
Thrust Angle					0.17°			

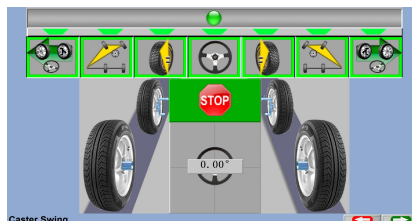
Primary Specifications



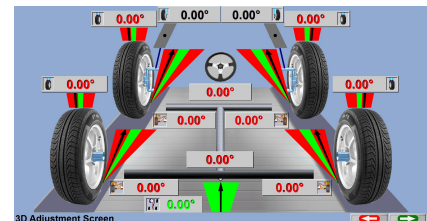
Push - Pull Runout



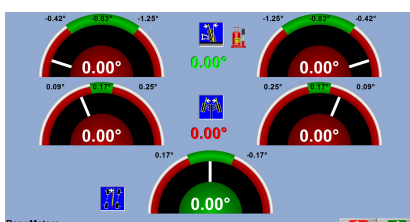
Brake Lock Setting



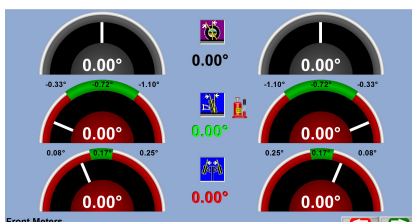
Caster Swing



3D Live Adjust Screen



Rear Meter Reading



Front Meter Reading

All Reading Screen

	Left	Cross	Right
Center	0.00°	0.00°	0.00°
Camber	0.00°	0.00°	0.00°
Toe	0.00°	0.00°	0.00°
SAI	0.00°	0.00°	0.00°
Included Angle	---	---	---
Toe Out On Turn	0.00°	0.00°	0.00°
Max Turn	0.00°	0.00°	0.00°
Setback		0.1	
Rear			
Camber	0.00°	0.00°	0.00°
Toe	0.00°	0.00°	0.00°
Thrust Angle		0.00°	
Setback		0.1	

All Reading Screen

# STANDARD ACCESSORIES



Automatic lift beam system



Cabinet Assembly



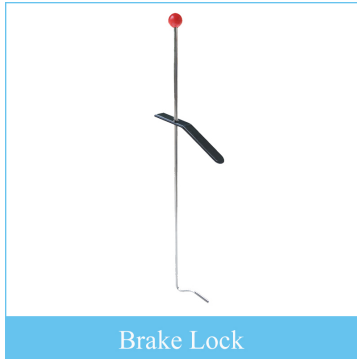
Targets and Clamps



Target Protecting String



Steering Wheel Lock



Brake Lock



Wheel Rubber Block



Turn Tables



Dell PC & 21.5" LCD Display



Printer



Parking Aid Camera

## Detailed Packing List:

- **Automatic lift beam system 1PC**  
(including 2 cameras, Aluminum beam,Lift post with motor, HUB board, USB and Power cables)
- **Cabinet Assembly red or blue 1PC**  
(including Power supply, socket strip,wheel clamp hangers,fuse,power cable )
- **Targets & Clamps 1SET**  
(including 2 pcs of front targets and clamps, 2 pcs of rear targets and clamps, 16 pcs claws)
- **Wheel Steering Lock 1PC**
- **Brake Lock 1PC**
- **Target Protecting Strings 4PCS**
- **Wheel Rubber Block 2PCS**
- **Turntables 1PAIR**
- **Dell PC & 21.5" LCD Display,Mouse & Keyboard 1SET**
- **HP Printer 1PC**
- **Parking Aid Camera 1PC**