



UNIQUE FUNCTIONS:

TWO WHEEL QUICK ALIGNMENT

VOICE GUIDE SYSTEM

EXTRA CAMERA FOR PARKING ASSISTANCE

Model: V3DI

# 3D WHEEL ALIGNMENT

Easy-to-use Alignment Solution

---

SERIES V3DI

**ACCURATE & FAST**

# 3D IMAGING WHEEL ALIGNMENT SYSTEM

More Fast, More Accurate and Good Repeatability!

*Features:*

Real 3D Camera Measuring Technology

Just One Time Calibration in Factory

Brand Dell Computer with Windows 7 System

Humanized Design of Alignment Software with Easy-to-use Operation

English Voice Navigation for Operation

Multi-language Alignment Software Interface

More than 20,000 Car models Specification Worldwide with Free Update

Extra Camera for Lift Parking Aid System

Two Wheel Quick Alignment Function

## Main Technical Parameters

Projects	Accuracy	Range
Display Accuracy	0.01mm / 0.01°	/
SAI	±0.05°	±25°
Camber	±0.02°	±10°
Toe	±0.02°	±20°
Caster	±0.05°	±20°
Thrust angle	±0.02°	±10°
Back angle	±0.01°	±10°
Total Toe	±0.02°	±20°

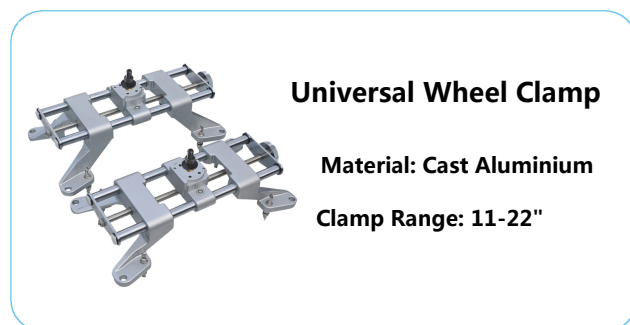
### Power Request:

100-240V, 50/60HZ, Single Phase

### Installation Type:

4 Post Cr Lift, Scissor Lift or Pit Type

Height range: 108-182cm



*Quick alignment, saving your time and make more profit---Join us together!*

# "SMART" Cameras + "EASY" Software

Data Acquisition using high resolution 3D imaging cameras



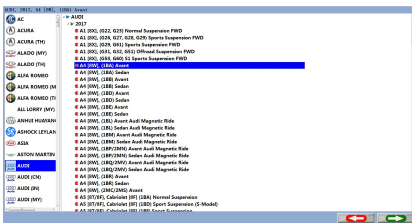
No Electronics on Wheels



Unique design for alignment only, not industrial camera  
 Background removing function exclude strong or dark light effect  
 Super long usage life of LED strobe, camera can still work even half of LED damage

## EASY-TO-USE WHEEL ALIGNMENT SOFTWARE

Simple steps alignment: Save Time and Increase Revenue

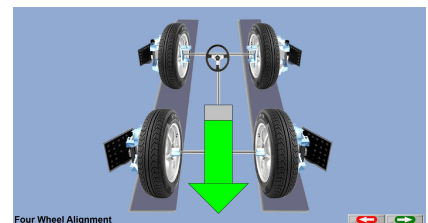


Car Model Selection

Primary Specifications

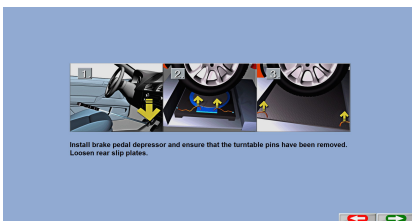
Model	2017	AI	IS	(10)	Avant			
Front								
Caster		Min.	Prof.	Max.	Cross	Min.	Prof.	Max.
Camber	-1.10°	-0.72°	-0.33°	0.50°	-1.10°	-0.72°	-0.33°	
SAT								
Individual Toe	0.08°	0.17°	0.25°		0.08°	0.17°	0.25°	
Total Toe								
		Min.	Prof.	Max.				
		0.17°	0.33°	0.50°				
Rear								
Camber	-1.25°	-0.83°	-0.42°	0.50°	-1.25°	-0.83°	-0.42°	
Individual Toe	0.09°	0.17°	0.25°		0.09°	0.17°	0.25°	
Total Toe								
		Min.	Prof.	Max.				
		0.17°	0.33°	0.50°				
Thrust Angle			0.17°					

Primary Specifications

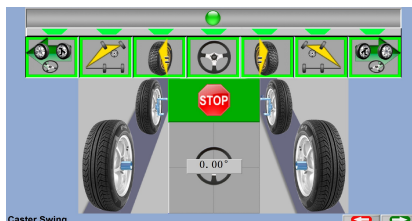


Four Wheel Alignment

Push - Pull Runout

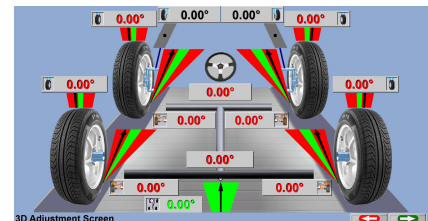


Brake Lock Setting



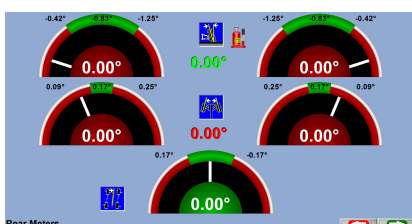
Caster Swing

Caster Swing

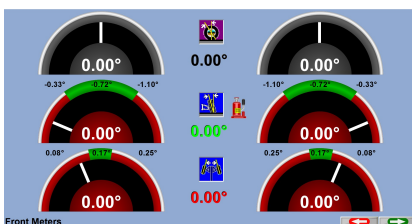


3D Adjustment Screen

3D Live Adjust Screen



Rear Meter Reading



Front Meter Reading

All Reading Screen

	Left	Cross	Right
Center	0.00°	0.00°	0.00°
Camber	0.00°	0.00°	0.00°
Toe	0.00°	0.00°	0.00°
SAI	0.00°	0.00°	0.00°
Included Angle	---	---	---
Toe Out On Turn	0.00°	0.00°	0.00°
Max Turn	0.00°	0.00°	0.00°
Steering		0.1	
Rear			
Camber	0.00°	0.00°	0.00°
Toe	0.00°	0.00°	0.00°
Thrust Angle		0.00°	
Steering		0.1	

All Reading Screen

# STANDARD ACCESSORIES



Camera Beam Assembly



Camera Beam Post



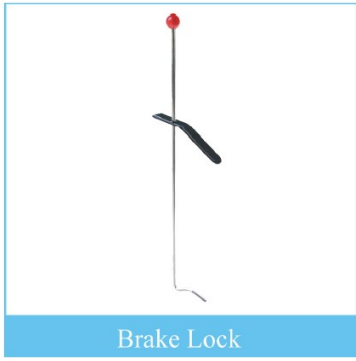
Cabinet Assembly



Targets and Clamps



Steering Wheel Lock



Brake Lock



Target Protecting String



Wheel Rubber Block



Turn Tables



Dell PC & 21.5" LCD Display



Printer



Parking Aid Camera

## Detailed Packing List:

- **Camera Beam Assembly 1PC**  
(including 2 cameras, Aluminum beam, camera cover, HUB board, USB and Power cables)
- **Camera Beam Support 1PC**  
(including 3pc of dia16mm expansion bolts)
- **Cabinet Assembly red or blue 1PC**  
(including Power supply, socket strip, wheel clamp hangers, fuse, power cable )
- **Targets & Clamps 1SET**  
(including 2 pcs of front targets and clamps, 2 pcs of rear targets and clamps, 16 pcs claws)
- **Wheel Steering Lock 1PC**
- **Brake Lock 1PC**
- **Target Protecting Strings 4PCS**
- **Wheel Rubber Block 2PCS 1**
- **Turntables 1PAIR**
- **Dell PC & 21.5" LCD Display, Mouse & Keyboard 1SET**
- **HP Printer 1PC**
- **Parking Aid Camera 1PC**